

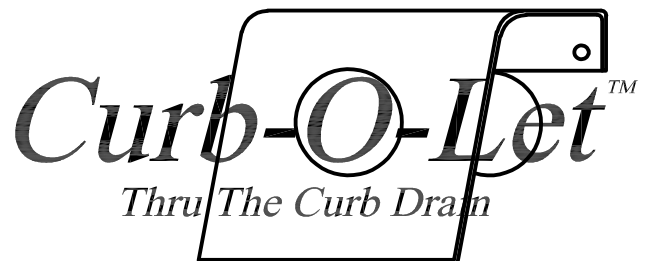
90° ELBOW BRACE DETAIL

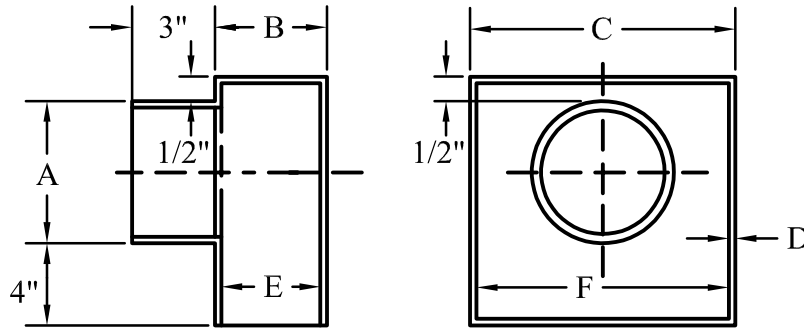
NOTE: BRACES HAVE 4-INCH LONG TACK WELD INSIDE RECTANGULAR END FOR ADDITIONAL STRENGTH

PRODUCT SPECIFICATION - 90° ELBOW

PRODUCT LIST				PRODUCT DIMENSIONS							NUMBER OF BRACES
ROUND EQUIV.	DIMENSIONS	MODEL	ROUND AREA (SQ. IN.)	A	B	C	D	E	F		
8"	3"x17"x13"	CP-SP917	50.027	8.625"	4.269"	17.269"	10 GA.	3"	17"	1	
8"	4"x14"x13"	CP-SP914	50.027	8.625"	3.269"	14.269"	10 GA.	4"	14"		
10"	3"x27"x13"	CP-SP927	78.854	10.75"	3.269"	27.269"	10 GA.	3"	27"	2	
10"	4"x22"x13"	CP-SP922	78.854	10.75"	4.269"	22.269"	10 GA.	4"	22"	1	
12"	4"x28"x17"	CP-SP928	111.931	12.75"	4.269"	28.269"	10 GA.	4"	28"	2	

MATERIAL: 10 GAUGE GALVANIZED A653 G90, MEETS ASTM A-653. TENSILE STRENGTH 50,000. YIELD 36,000. ALL WELDS WILL BE SPRAYED, ROLLED OR BRUSHED WITH GALVANIZED #95 COATING. RECTANGULAR CONNECTION: MASTIC (MUST MEET OR EXCEED ASTM D-4586), CAULKING, EPOXY OR OTHER CITY OF LOS ANGELES APPROVED METHOD. ROUND CONNECTION: CAST IRON/ PLASTIC PIPE CONNECTION USE CAST IRON OR PLASTIC TO STEEL COUPLINGS. CONTACT BUREAU OF CONTRACT ADMINISTRATION MATERIAL CONTROL SECTION AT (213) 485-5080 FOR FABRICATION INSPECTION





90° ELBOW DETAIL

NOTE: BRACES HAVE 4-INCH LONG TACK WELD INSIDE
RECTANGULAR END FOR ADDITIONAL STRENGTH

PRODUCT SPECIFICATION - 90° ELBOW

PRODUCT LIST

PRODUCT DIMENSIONS

ROUND EQUIV.	DIMENSIONS	MODEL	ROUND AREA (SQ. IN.)	A	B	C	D	E	F	NUMBER OF BRACES
4"	3"x5"x9"	CP-SP905	12.730	4.5"	3.269"	5.269"	10 GA.	3"	5"	
5"	3"x8"x10"	CP-SP908	20.005	5.563"	3.269"	8.269"	10 GA.	3"	8"	
6"	3"x12"x11"	CP-SP912	28.890	6.625"	3.269"	12.269"	10 GA.	3"	12"	
8"	3"x17"x13"	CP-SP917	50.027	8.625"	4.269"	17.269"	10 GA.	3"	17"	1
8"	4"x14"x13"	CP-SP914	50.027	8.625"	3.269"	14.269"	10 GA.	4"	14"	
10"	3"x27"x13"	CP-SP927	78.854	10.75"	3.269"	27.269"	10 GA.	3"	27"	2
10"	4"x22"x13"	CP-SP922	78.854	10.75"	4.269"	22.269"	10 GA.	4"	22"	1
12"	4"x28"x17"	CP-SP928	111.931	12.75"	4.269"	28.269"	10 GA.	4"	28"	2

MATERIAL: 10 GAUGE GALVANIZED A653 G90, MEETS ASTM A-653. TENSILE STRENGTH 50,000. YIELD 36,000. ALL WELDS WILL BE SPRAYED, ROLLED OR BRUSHED WITH GALVANIZED #95 COATING. RECTANGULAR CONNECTION: MASTIC (MUST MEET OR EXCEED ASTM D-4586), CAULKING, EPOXY OR OTHER CITY OF LOS ANGELES APPROVED METHOD. ROUND CONNECTION: CAST IRON/ PLASTIC PIPE CONNECTION USE CAST IRON OR PLASTIC TO STEEL COUPLINGS. CONTACT BUREAU OF CONTRACT ADMINISTRATION MATERIAL CONTROL SECTION AT (213) 485-5080 FOR FABRICATION INSPECTION

